

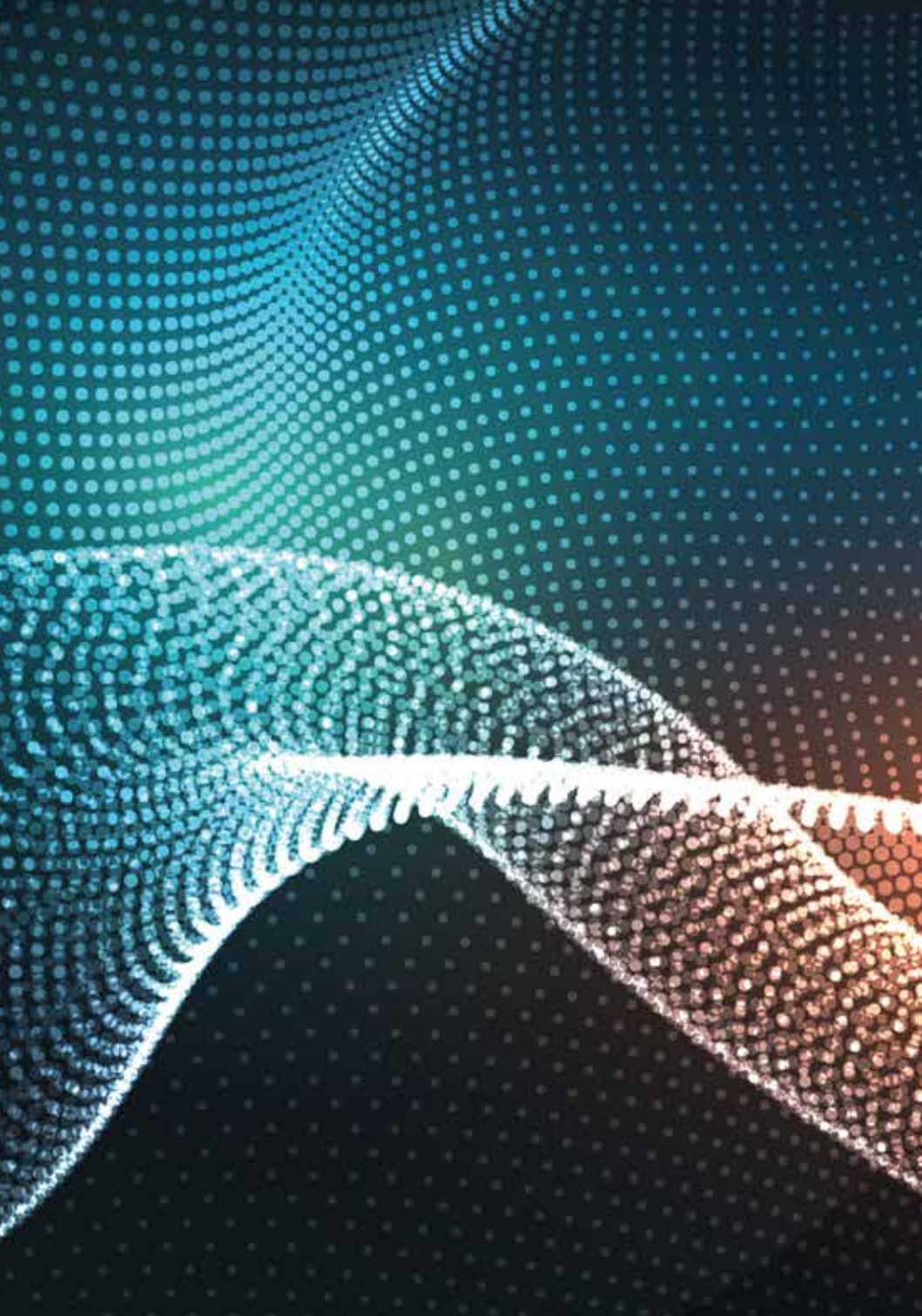
FROM PORTUGAL



messe frankfurt

techtextil
9 - 12 may 2017

TECHNICAL
TEXTILES
FROM
PORTUGAL



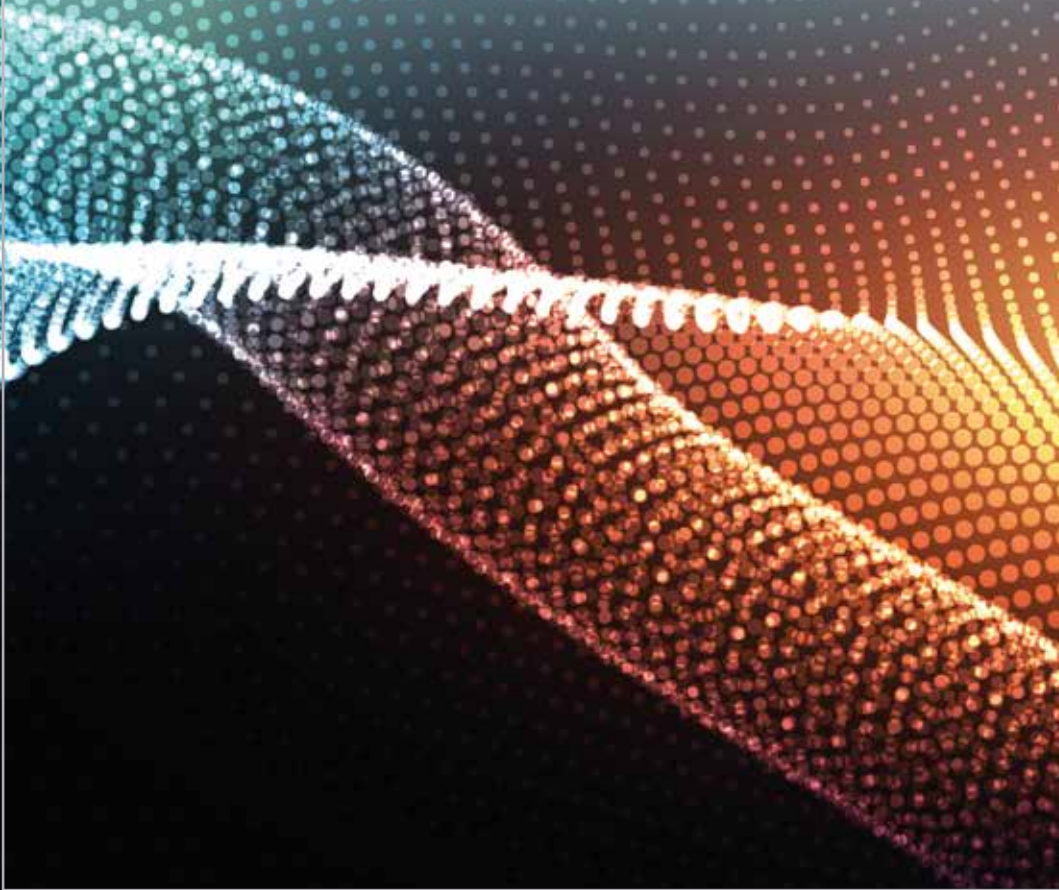
FROM PORTUGAL techtexsil 2017

Techttextil is the leading international trade fair for technical textiles and nonwovens showing the full range of potential uses of textile technologies.

Portuguese Technical Textiles sector will be highly represented at Techttextil. A group of 23 textile companies and CITEVE, the Portuguese testing and research institute will showcase the best of the Portuguese offer.

This Portuguese collective exhibition at Techttextil, organised by ASM under the umbrella branding "Technical Textiles FROM PORTUGAL", brings together an impressive group of companies offering a full range of services and products, from engineering to production, of high tech solutions, addressing very challenging markets such as automotive, protection or sports sectors. Visit us and see how Portuguese technical textiles combine performance with design and functionality for the most demanding applications and markets.

FROM PORTUGAL

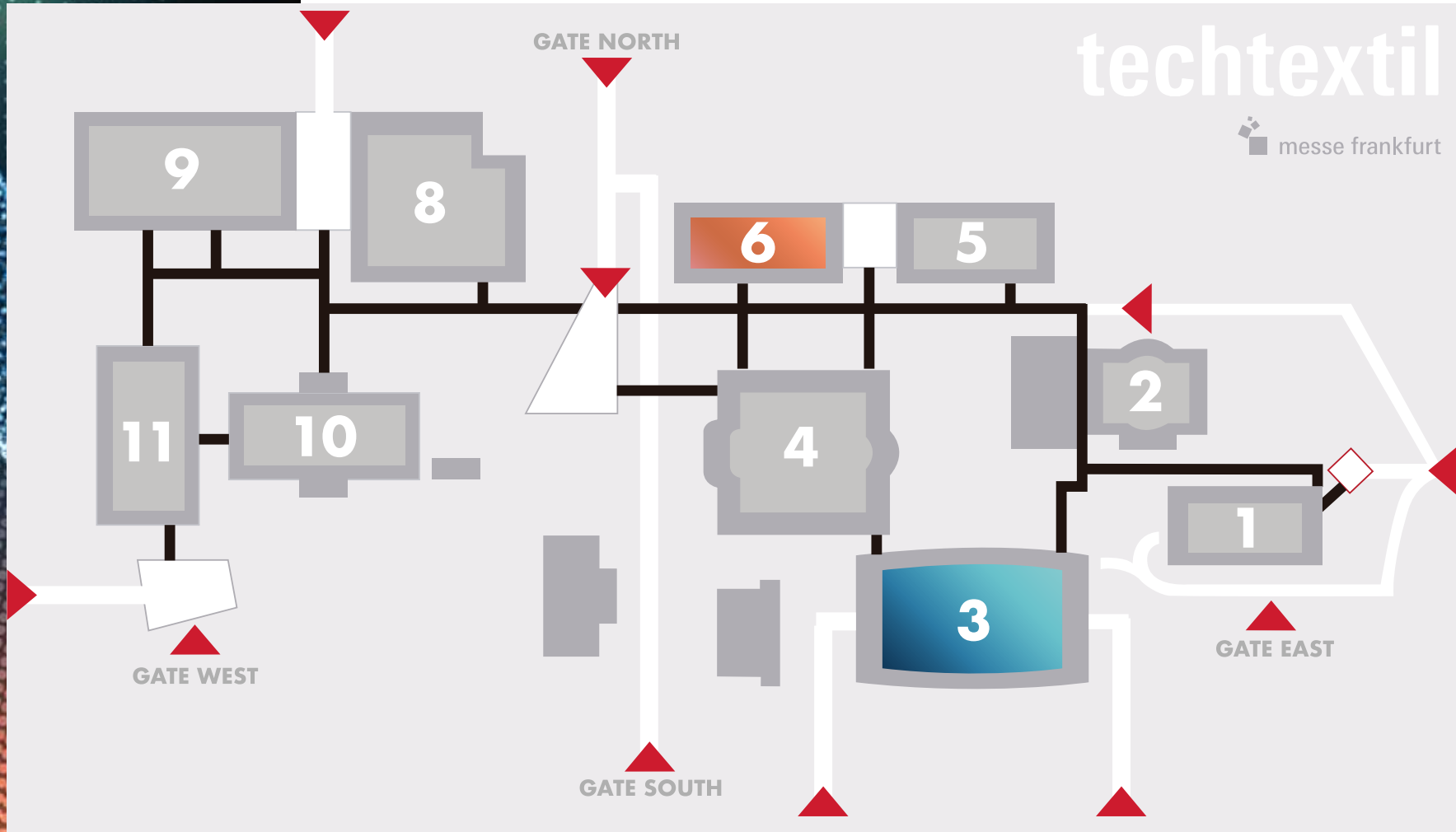


MAP

FROM PORTUGAL

techtex

messe frankfurt



Hall 3.1

Artefita - Indústria de Passamanarias, Lda	3.1 - B41
Carlom Têxteis, S.A.	3.1 - F31
Coltec - Neves & C ^o , Lda	3.1 - B31
Fitexar - Fibras Têxteis Artificiais, S.A.	3.1 - B33
Fitor, Lda	3.1 - B40
Foot By Foot - Revestimentos Têxteis, Lda	3.1 - C42
Idepa - Indústria de Passamanarias, S.A.	3.1 - C34
Lipaco - Linhas para Confecções, Lda	3.1 - C36
Tintex - Tinturaria Têxtil de Cerveira, S.A.	3.1 - B34
Wtex - Textile Solutions, Lda	3.1 - B38

Hall 6.1

A. Sampaio & Filhos -Têxteis, S.A.	6.1 - C08
Gulbena - Têxteis, S.A.	6.1 - C14
Heliotextil, S.A.	6.1 - C02

Other Portuguese Companies

CeNTI - Centre of Nanotechnology and Smart Materials
CITEVE - Centro Tecnológico das Indústrias Têxtil e do Vestuário de Portugal
Cordex - Companhia Industrial Têxtil S.A.
Endutex - Revestimentos Têxteis, S.A.
ERT - Têxtil Portugal, S.A.
Fisipe - Fibras Sintéticas de Portugal, S.A.
Inovafil - Fiação, S.A.
Island Cosmos Unipessoal, Lda
Manifesto Moda
Penteadora - Sociedade Industrial de Penteação e Fiação de Lãs, S.A.



Hall 3.1

ARTEFITA®

NARROW FABRICS WITH SOUL

3.1 - B41

COMPANY: Artefita, Lda

ADDRESS: Avenida das Escolas

ZIP CODE: 4540-315 Escariz · Portugal

TELEPHONE: +351 256 926 411

FAX: +351 256 926 502

E-MAIL: gonzaga@artefita.pt

WEBSITE: www.artefita.pt

COMMERCIAL CONTACT: Gonzaga Oliveira

BRAND NAMES: ARTEFITA, KNOT, ARCTIC

PRODUCTS: Technical Webbing: Reflective; Flame Retardant; Anti-Static;
Waterproof; Jacquard; Anti-UV; Anti-Bacterian.
Lashing straps; Lifting Straps; Car rack straps; Outdoor straps;
Baby seat belts; Belts for nautical sports; Lanyards.
Straps and sheets for roll containers.
Cooler bags and insulated containers.
Lap straps for supermarket trolleys.

APPLICATIONS



AGROTECH



BUILDTECH



CLOTHTECH



GEOTECH



HOMETECH



INDUTECH



MEDTECH



MOBLITECH



PACKTECH



PROTECH



SPORTTECH



3.1 - F31

COMPANY: Carlom Têxteis, S.A.

ADDRESS: Rua do Sistelo, 665, Apt. 11

ZIP CODE: 4435-452 Rio Tinto - Portugal

TELEPHONE: +351 224 891 270

FAX: +351 224 803 259

E-MAIL: textile@carlom.com

WEBSITE: www.carlom.com

COMMERCIAL CONTACT: Filipe Pereira - comercial@carlom.com

PRODUCTS: Warp knitted fabric for automotive, upholstery,
footwear and clothing industries;
Automotive industry – specialized in: Headliners / Pillars / Seats;
Footwear industry – specialized in: lining

APPLICATIONS



AGROTECH



BUILDTECH



CLOTHTECH



GEOTECH



HOMETECH



INDUTECH



MEDTECH



MOBILTECH



PACKTECH



PROTECH



SPORTTECH



3.1 - B31

COMPANY: Coltec - Neves & C^o, Lda

ADDRESS: Rua de Vilar, Lote 21 Candoso, S. Tiago

ZIP CODE: 4835-256 Guimarães - Portugal

TELEPHONE: +351 253 520 630

FAX: +351 253 520 633

E-MAIL: coltec@coltec.mail.pt

WEBSITE: www.coltec.pt

COMMERCIAL CONTACT: Francisco Fernandes - franciscof.coltec@gmail.com

BRAND NAMES: Coltec

PRODUCTS: Technical textiles: protective cloths, hospital and hygiene-sanitary materials, textiles for sports and leisure outdoor activities.

Household textiles, mattress protection, quilt covers, bedspreads, curtains and pillows covers.

Footwear components, thermo bonding and self-adhesives films for interlinings and insoles.

Special effects and foils for fashion apparel.

APPLICATIONS



AGROTECH



BUILDTECH



CLOTHTECH



GEOTECH



HOMETECH



INDUTECH



MEDTECH



MOBILTECH



PACKTECH



PROTECH



SPORTTECH



3.1 - B33

COMPANY: Fitexar and Têxtil Antonio Falcão

ADDRESS: Rua Henrique Correia 3 - Arcozelo

ZIP CODE: 4750-164 Barcelos - Portugal

TELEPHONE: +351 253 808 410

FAX: +351 253 808 419

E-MAIL: carlosf.fitexar@falcaofibras.com | a.arantes@falcaofibras.com

afalcao@falcaofibras.com | fgcastro@falcaofibras.com

WEBSITE: www.falcaofibras.com

COMMERCIAL CONTACT: Carlos Fernandes | Antonio Arantes

PRODUCTS: Texturized Yarns polyester and polyamide; Recycled yarn;
Dope dyed and dyeing yarn; Antimicrobial yarn;
UV Protector yarn; Phosphorescent yarn; Stamped yarn;
Ignifugo yarn; Mélange yarn (PES + PA, PES + CO, PES + CV);
Covering yarn (Air-Jet and Conventional); Twisted yarn;
Rewinding yarn

APPLICATIONS



AGROTECH



BUILDTECH



CLOTHTECH



GEOTECH



HOMETECH



INDUTECH



MEDTECH



MOBILTECH



PACKTECH



PROTECH



SPORTTECH



3.1 - B40

COMPANY: Fitor, Lda

ADDRESS: Estrada Nacional 204-5, N.258

ZIP CODE: 4770-788 Avidos - Vila Nova de Famalicão - Portugal

TELEPHONE: +351 252 303 300

FAX:+351 252 303 322

E-MAIL: fitor@fitor.pt

WEBSITE: www.fitor.pt

COMMERCIAL CONTACT: António Pereira

BRAND NAMES: FITOR

PRODUCTS: Polyamide and Polyester

Anti-bacterial, Recycled, Flame Retardant, Fresh, Warm,
Infra-Red, Moisturizing, Aloe Vera, Fluorescent, Strecht,
Anti-UV, Dry Release, Melange and Fancy yarns;
Monofilament and multifilament;
Stainless steel and carbon fibers;
Glass fiber single and covered;
Space dyed fibers;

APPLICATIONS



AGROTECH



BUILDTECH



CLOTHTECH



GEOTECH



HOMETECH



INDUTECH



MEDTECH



MOBILTECH



PACKTECH



PROTECH



SPORTTECH

3.1 - C42

COMPANY: Foot By Foot - Revestimentos Têxteis, Lda

ADDRESS: Rua do Pinheiro

ZIP CODE: 4611-428 Lagares - Felgueiras - Portugal

TELEPHONE: +351 255 330 819

FAX: +351 255 330 821

E-MAIL: info@tectex.pt

WEBSITE: www.tectex.pt

COMMERCIAL CONTACT: António Pereira - apereira@footbyfoot.pt

BRAND NAMES: Tectex

PRODUCTS: Household Textiles:

Mattress and pillows protectors; Table Protector
Ironing Boarded; Curtains

Footwear & Apparel:

Waterproof and breathable fabrics; Performance textiles
Protection textiles; Very light laminated textiles

Transportation:

Seat Covers; Car Covers; Automotive Interiors

APPLICATIONS



AGROTECH



BUILDTECH



CLOTHTECH



GEOTECH



HOMETECH



INDUTECH



MEDTECH



MOBILTECH



PACKTECH



PROTECH



SPORTTECH

idepa

THE ACCESSORY
IS ESSENTIAL

3.1 - C34

COMPANY: Idepa - Indústria de Passamanarias, Lda

ADDRESS: Avenida 1° de Maio, 71

ZIP CODE: 3700-227 S. João da Madeira - Portugal

TELEPHONE: +351 256 201 700

E-MAIL: nuno.almeida@idepa.com

WEBSITE: www.idepa.pt

COMMERCIAL CONTACT: Nuno Almeida

PRODUCTS: Custom webbings

Buckle straps

Elastic webbings

Cotton webbings

Polypropylene webbings

Polyester webbings

APPLICATIONS



AGROTECH



BUILDTECH



CLOTHTECH



GEOTECH



HOMETECH



INDUTECH



MEDTECH



MOBILTECH



PACKTECH



PROTECH



SPORTTECH



3.1 - C36

COMPANY: LIPACO - Linhas para confecções, Lda

ADDRESS: Av. Comendador Francisco Alves Quintas, 49

(Zona Industrial do Bouro - Gandra)

ZIP CODE: 4740-010 Esposende - Portugal

TELEPHONE: +351 253 969 240 / +351 916 991 580

FAX: +351 253 969 246/8

E-MAIL: lipaco@lipaco.com

WEBSITE: www.lipaco.com

COMMERCIAL CONTACT: Jorge Pereira

BRAND NAMES: LIPACO, CALIPSO, SUPER CALIPSO, CALIPSO BORDA, POLYPIC, SWAN, OFIR, TUCANO, MONOFIL, PEGASUS, PROTEK-M, MUSICA

PRODUCTS: Polyester and Nylon texturized yarns for socks, knitting, weaving and trimmings industry;

Sewing threads in Spun Pes, Poly/Poly Corespun, Poly/Coton Corespun, Coton, Pes and PA texturized, for all applications;

Dye house service materials

APPLICATIONS



AGROTECH



BUILDTECH



CLOTHTECH



GEOTECH



HOMETECH



INDUTECH



MEDTECH



MOBILTECH



PACKTECH



PROTECH



SPORTTECH

TINTEX

3.1 - B34

COMPANY: Tintex Textiles, S.A.

ADDRESS: Zona Industrial Polo 1 - Campos - Apt 99

ZIP CODE: 4924-909 Campos - Vila Nova de Cerveira - Portugal

TELEPHONE: +351 251 708 200

E-MAIL: mariojorge.silva@tintextextiles.com

WEBSITE: www.tintextextiles.com

COMMERCIAL CONTACT: ricardo.silva@tintextextiles.com

BRAND NAMES: TINTEX

PRODUCTS: Jersey fabrics in natural and sustainable fibers including: tencel®/lyocell; organic cotton, linen and wool; recycled natural fibers and recycled PES; merino wool blends. Functional and aesthetic finishes: Coating, Membranes; Laminates; High Frequency; Mercerization.

PRODUCT END USES: Activewear; Athleisure; Sports & Street; Fashion; Underwear; Outer Layer; Second Layer; Base Layer.

CERTIFIED: OEKO-TEX®; GOTS n° 110332; OCS n° 110332; BCI Member; ECOTEC®; TENCEL®

APPLICATIONS



AGROTECH



BUILDTECH



CLOTHTECH



GEOTECH



HOMETECH



INDUTECH



MEDTECH



MOBILTECH



PACKTECH



PROTECH



SPORTTECH

WTEEX

WORKING WITH LAYERS

3.1 - B38

COMPANY: WTEX – Textile Solutions, Lda

ADDRESS: Av, 1º Maio – Zona Industrial Travessas

ZIP CODE: 43700-227 - S. João Madeira - Portugal

TELEPHONE: +351 256 200 500

E-MAIL: info@wtex.pt

WEBSITE: www.wtex.pt

COMMERCIAL CONTACT: diana.marques@wtex.pt

PRODUCTS: Footwear; Fashion; Home Textiles; Child Care; Sport

Technologies: Lamination; Technical Bonding; Foils and
Special effects; Sublimation; Thermo Moulding.

APPLICATIONS



AGROTECH



BUILDTECH



CLOTHTECH



GEOTECH



HOMETECH



INDUTECH



MEDTECH



MOBILTECH



PACKTECH



PROTECH



SPORTTECH



Hall 6.1



A. SAMPAIO & FILHOS

TÊXTEIS, S.A.

6.1 - C08

COMPANY: A. Sampaio & Filhos, Têxteis, S.A.

ADDRESS: Rua São Bento da Batalha 76 – Apartado 16

ZIP CODE: 4780-909 Santo Tirso - Portugal

TELEPHONE: +351 252 808 550

FAX: +351 252 808 551

E-MAIL: asampaio@asampaio.pt

WEBSITE: www.asampaio.pt

COMMERCIAL CONTACT: João Mendes - joao.mendes@asampaio.pt

BRAND NAMES: A.SAMPAIO, PROTECTION +

PRODUCTS: Active wear fabrics

Sportswear fabrics

Underwear fabrics

Comprehensive range of certified fabrics for PPE

Workwear fabrics

High quality fashion fabrics

APPLICATIONS



AGROTECH



BUILDTECH



CLOTHTECH



GEOTECH



HOMETECH



INDUTECH



MEDTECH



MOBILTECH



PACKTECH



PROTECH



SPORTTECH



6.1 - C14

COMPANY: Gulbena - Têxteis, S.A.

ADDRESS: Rua de Porinhos, 405

ZIP CODE: 4824 - 909 Fafe - Portugal

TELEPHONE: +351 253 490 020

FAX: +351 253 507 111

E-MAIL: gulbena@gulbena.com

WEBSITE: www.gulbena.com

COMMERCIAL CONTACT: Raquel Pereira

BRAND NAMES: Gulbena®, Corporalis®, Plexus®, Prymal®, Chroma®, Spiro®, Imprimis by Gulbena®

PRODUCTS: Piqué, Jersey, Interlock, Fleece, Tencel®, Coolmax®, Thermocool®, Thermolite®, 3XDRY®, Modal®, Nanosphere®, ColdBlack®, Coolmax® Fresh UPF, Thermocool®, Fresh UPF, Beltron®

APPLICATIONS



AGROTECH



BUILDTECH



CLOTHTECH



GEOTECH



HOMETECH



INDUTECH



MEDTECH



MOBILTECH



PACKTECH



PROTECH



SPORTTECH



Inspiring Details



6.1 - C02

COMPANY: HelioTextil, S.A.

ADDRESS: Rua dos Combatentes do Ultramar - Zona Industrial das Travessas

ZIP CODE: 3700-089 São João da Madeira - Portugal

TELEPHONE: +351 256 201 178

FAX: +351 256 832 824

E-MAIL: vania.fazenda@heliotextil.com

WEBSITE: www.heliotextil.com

COMMERCIAL CONTACT: Vânia Fazenda

BRAND NAMES: HELIOTEXTIL

PRODUCTS: Heat Transfers, Elastics, Ribbons, Labels, Badges

Printed Electronics, RFID solutions, Fully Customizable Sealings

Smart Viewer, "Conductive Ribbons"

APPLICATIONS



AGROTECH



BUILDTECH



CLOTHTECH



GEOTECH



HOMETECH



INDUTECH



MEDTECH



MOBLITECH



PACKTECH



PROTECH



SPORTTECH

Centi - Centre of Nanotechnology and Smart Materials

COMMERCIAL CONTACT: Braz Costa

E-MAIL: centi@centi.pt

WEBSITE: www.centi.pt

Cordex - Companhia Industrial Têxtil, S.A.

COMMERCIAL CONTACT: Nuno Vitó

E-MAIL: cordex@mail.telepac.pt

WEBSITE: www.cordex.com

Endutex - Revestimentos têxteis, S.A.

COMMERCIAL CONTACT: Vítor Abreu

E-MAIL: endutex@endutex.pt

WEBSITE: www.endutex.pt

ERT - Têxtil Portugal, S.A.

COMMERCIAL CONTACT: Diana Marques

E-MAIL: geral@ertgrupo.com

WEBSITE: www.ertgrupo.com

Fisipe - Fibras Sintéticas de Portugal, S.A.

COMMERCIAL CONTACT: Tiago Gonçalves

E-MAIL: tiagogoncalves@fisipe.pt

WEBSITE: www.fisipe.pt

Inovafil, Fiação S.A.

COMMERCIAL CONTACT: Pedro Martins

E-MAIL: inovafil@inovafil.pt

WEBSITE: www.inovafil.pt

Island Cosmos Unipessoal, Lda

COMMERCIAL CONTACT: Fernanda Valente

E-MAIL: fv.islandcosmos@gmail.com

WEBSITE: www.islandcosmos.com

Manifesto Moda

COMMERCIAL CONTACT: Paulo Gomes

E-MAIL: mm@manifestomoda.com

WEBSITE: www.manifestomoda.com

Penteadora - Sociedade Industrial de Penteação e Fiação de Lãs, S.A.

COMMERCIAL CONTACT: antonio.teixeira@penteadora.pt

E-MAIL: penteadora@penteadora

WEBSITE: www.penteadora.pt



citeve

TECNOLOGIA TÊXTIL
TEXTILE TECHNOLOGY

3.1 - B35

COMPANY: CITEVE - Textile Technology Centre

ADDRESS: Rua Fernando Mesquita, 2785

ZIP CODE: 4760-034 Vila Nova de Famalicão - Portugal

TELEPHONE: +351 252 300 300

FAX: +351 252 300 317

E-MAIL: ccastro@citeve.pt

WEBSITE: www.citeve.pt

COMMERCIAL CONTACT: Cristina Castro

BRAND NAMES: CITEVE, iTechStyle

CITEVE means textile knowledge and expertise along the textile & clothing value chain! From materials technology, across product and business management, to fashion and technical applications for high tech markets, provides everything your company needs to be competitive, innovative and sustainable. CITEVE service portfolio comprises Product and material testing, Product Design, Engineering & Certification, Specialized Consulting and Training, Technology Development, Business and Innovation Management!

Our headquarters are located in northern Portugal, in a 48.400 m2 campus at Vila Nova de Famalicão and we are strongly connected to the world through our international offices in Brazil, Chile, Argentina, Tunisia, Pakistan and India.

1.000 industry and retail clients all over the world trust us to be their experts and their technical support to reach the higher standards regarding product quality, performance, creativity and sustainability!

PROMOTERS & PARTNERS

PROMOTERS

Associação Selectiva Moda

Rua Roberto Ivens, 1314 - Sala 18

4450-251 Matosinhos – Portugal

Phone: +351 22 938 06 10

Fax: +351 22 937 48 16

Mail: modtissimo@mail.telepac.pt | selectivamoda@mail.telepac.pt

Site : www.modtissimo.com. | www.selectivamoda.com

PARTNERS

ATP – Associação Têxtil e Vestuário de Portugal

Rua Fernando Mesquita, 2785 – Edifício do CITEVE

4760 – 034 Vila Nova de Famalicão – Portugal

Phone: +351 252 30 30 30

Fax: +351 252 30 30 39

Mail: atp@atp.pt

Site : www.atp.pt

ANIL – Associação Nacional dos Industriais de Lanifícios

Quinta dos Lagoeiros – Av. da ANIL – Apartado 528 S. Lázaro

6201-907 Covilhã – Portugal

Phone: +351 275 319 140

Fax: +351 275 319 144

Email: anil@mail.telepac.pt

Site: www.anil.pt

ASM
ASSOCIACIÃO TÉCNICA ROTA

COMPETE
2020

PORTUGAL
2020



UNião Europeia
Fundo Europeu
de Desenvolvimento Regional

